



Radial Gas Blowers with AC internal rotor motor

high temperature version & $\Phi 120/130$ impeller

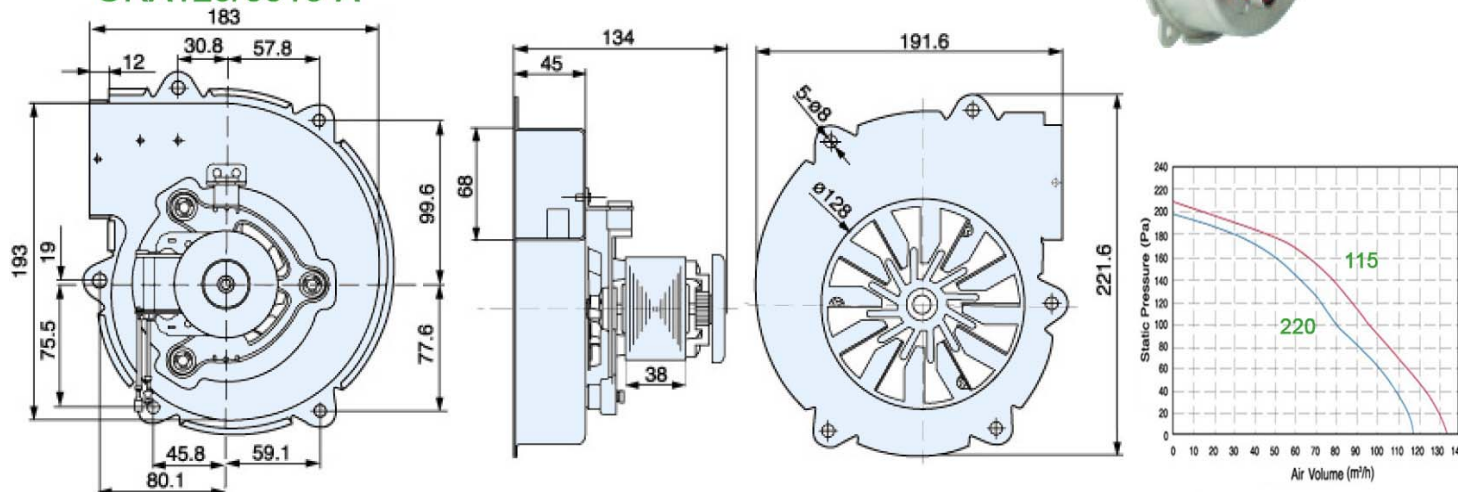
AC MOTOR
115V, 220V

GP Gas Blowers offer a high maximum pressure, stable pressure/air flow characteristic, good efficiency and low noise solutions.

- Both single and dual inlet versions are available
- Die casting aluminum Housing & aluminized Sheet Steel forward curved impeller
- Max. ambient air stream temperature: 180° C(Continuous), 250° C (instantaneous)
- Insulation class: "H", Motor protection: thermal protection
- Motor Mounting decoupled by silicon elements
- Mounting position must be specified for corresponding support elements.
- Applications: gas heating appliances, Heating system, fireplace
- Nozzles, Guard grill, pressure sensors, tachmeters and other accessories can be supplied



GRA120/0013-A



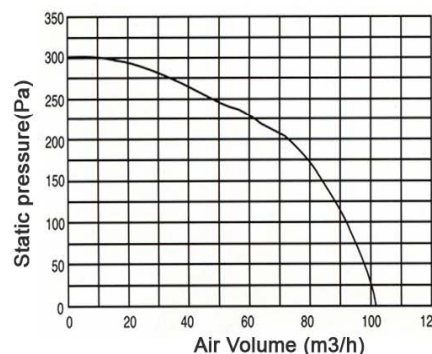
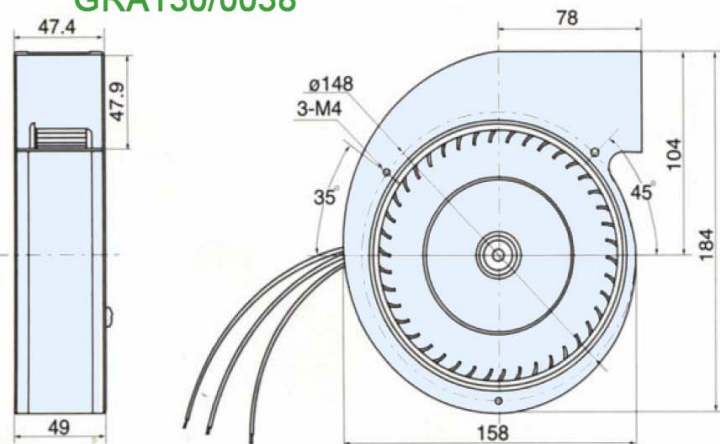
Model	Voltage (VAC)	Frequency (Hz)	Input Power (W)	Current (Amp)	Air Volume (m³/h)	Static pressure(Pa)	Net(kg)
GRA120/0013-A	110	60	47	0.81	135	220	1.5
	220	50	42	0.42	117	200	2.0

GP Gas Blowers offer a high maximum pressure, stable pressure/air flow characteristic, good efficiency and low noise solutions.

- Both single and dual inlet versions are available
- Housing & forward curved impeller: aluminized Sheet Steel
- Max. ambient air stream temperature: 180° C(Continuous), 250° C (instantaneous)
- Insulation class: "H", Motor protection: thermal protection
- Motor Mounting decoupled by silicon elements
- Mounting position must be specified for corresponding support elements.
- Applications: gas heating appliances, Heating system, fireplace
- Nozzles, Guard grill, pressure sensors, tachmeters and other accessories can be supplied



GRA130/0038



Model	Voltage (VAC)	Frequency (Hz)	Input Power (W)	Current (Amp)	Air Volume (m³/h)	Static pressure(Pa)	Net(kg)
GRA130/0038	220	50	28	0.13	100	300	2.0



Radial Gas Blowers with AC internal rotor motor

high temperature version & Φ140 impeller

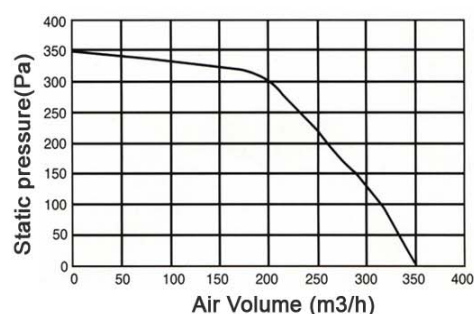
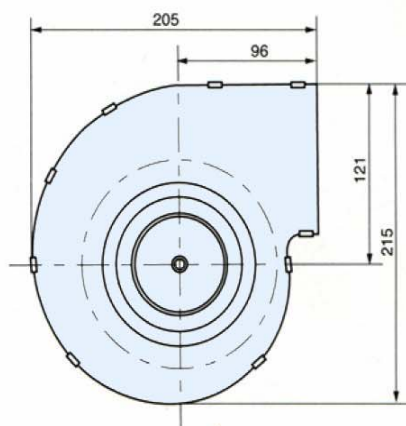
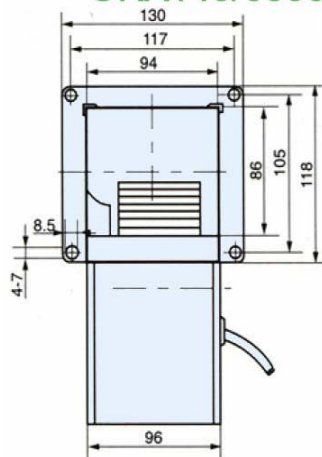
AC MOTOR
115V, 220V

GP Gas Blowers offer a high maximum pressure, stable pressure/air flow characteristic, good efficiency and low noise solutions.

- Both single and dual inlet versions are available
- Housing & forward curved impeller: aluminized Sheet Steel
- Max. ambient air stream temperature: 180° C(Continuous), 250° C (instantaneous)
- Insulation class: "H", Motor protection: thermal protection
- Motor Mounting decoupled by silicon elements
- Mounting position must be specified for corresponding support elements.
- Applications: gas heating appliances, Heating system, fireplace
- Nozzles, Guard grill, pressure sensors, tachmeters and other accessories can be supplied



GRA140/0059



Model	Voltage (VAC)	Frequency (Hz)	Input Power (W)	Current (Amp)	Air Volume (m ³ /h)	Static pressure(Pa)	Net(kg)
GRA140/0059	220	50	105	0.5	350	350	2.1

Model	Voltage (VAC)	Frequency (Hz)	Input Power (W)	Current (Amp)	Air Volume (m ³ /h)	Staic pressure(Pa)	Net(kg)